

Playing in the Shadows

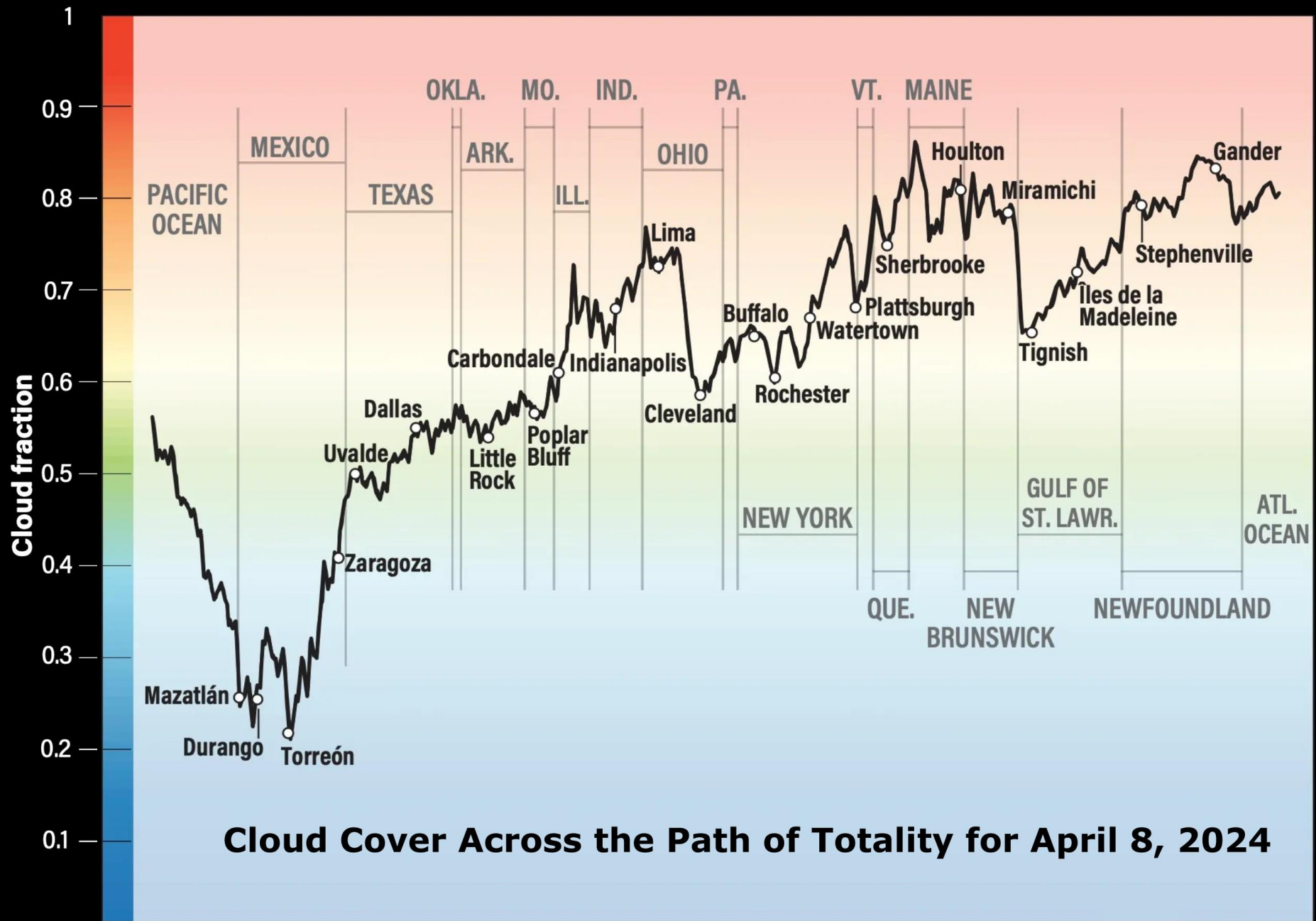


**April 8, 2024
Total Solar Eclipse
Derby, Vermont**



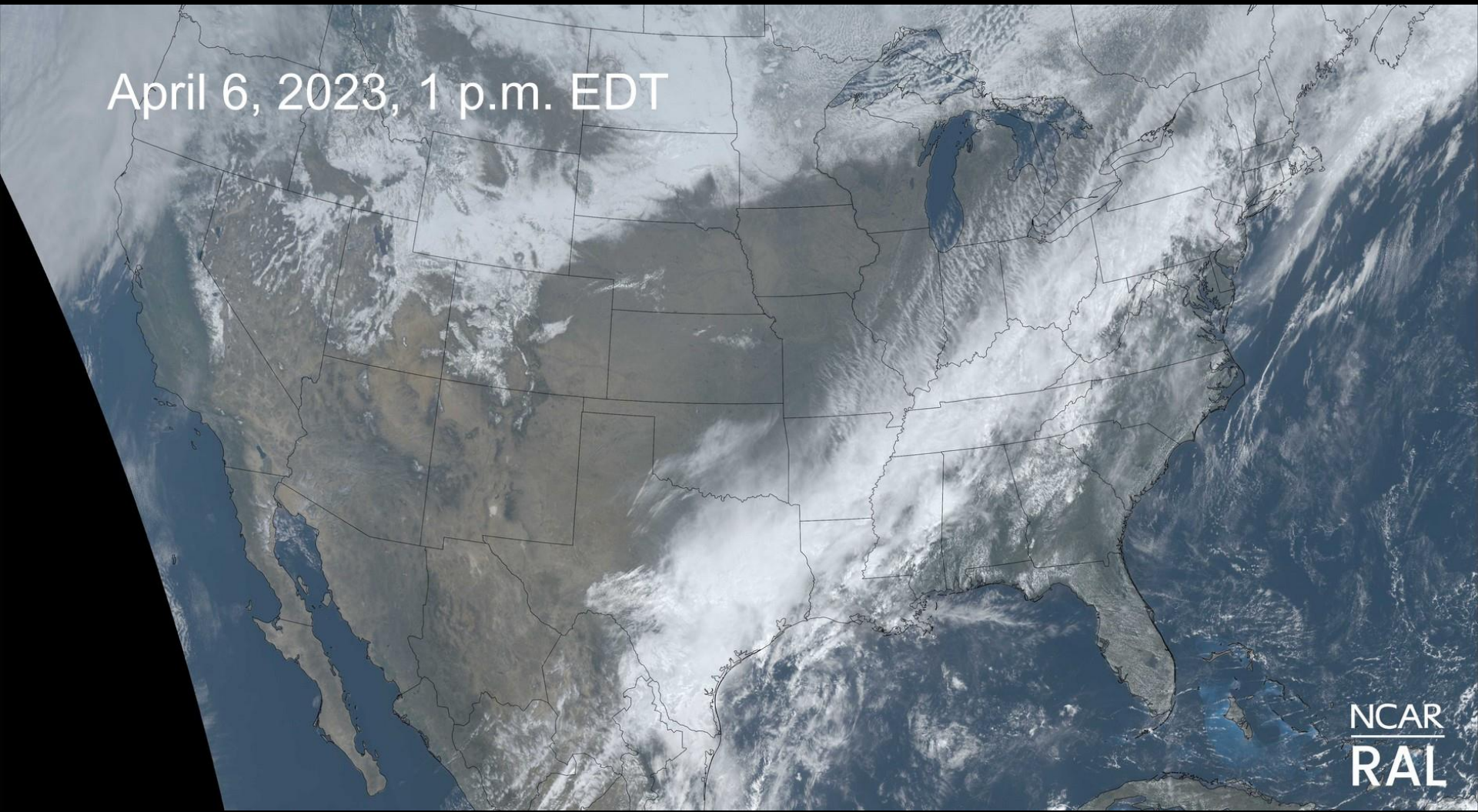
The WEATHER





Cloud Cover Across the Path of Totality for April 8, 2024

April 6, 2023, 1 p.m. EDT



NCAR
RAL

EXCLUSIVE ACCUWEATHER FORECAST

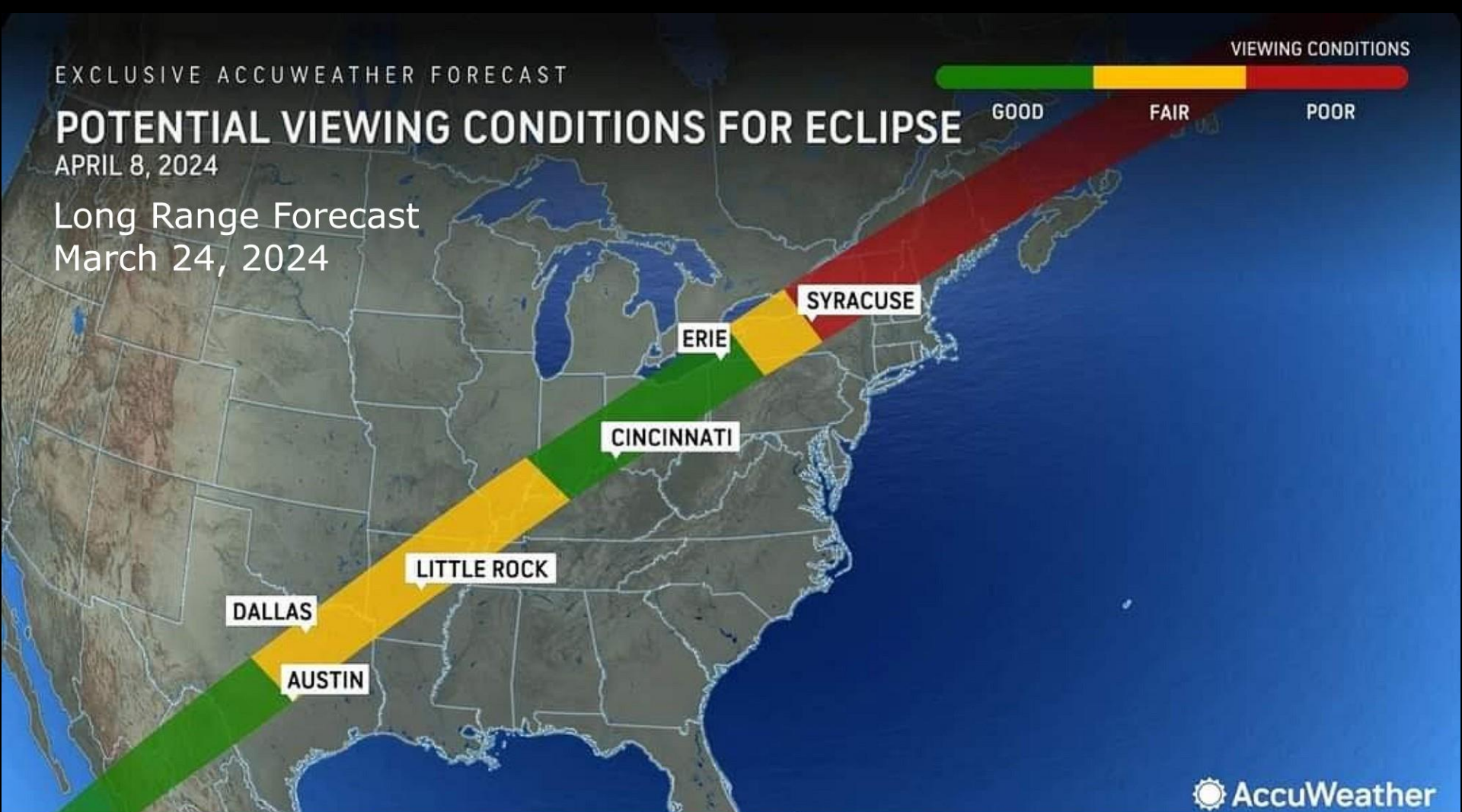
POTENTIAL VIEWING CONDITIONS FOR ECLIPSE

APRIL 8, 2024

Long Range Forecast

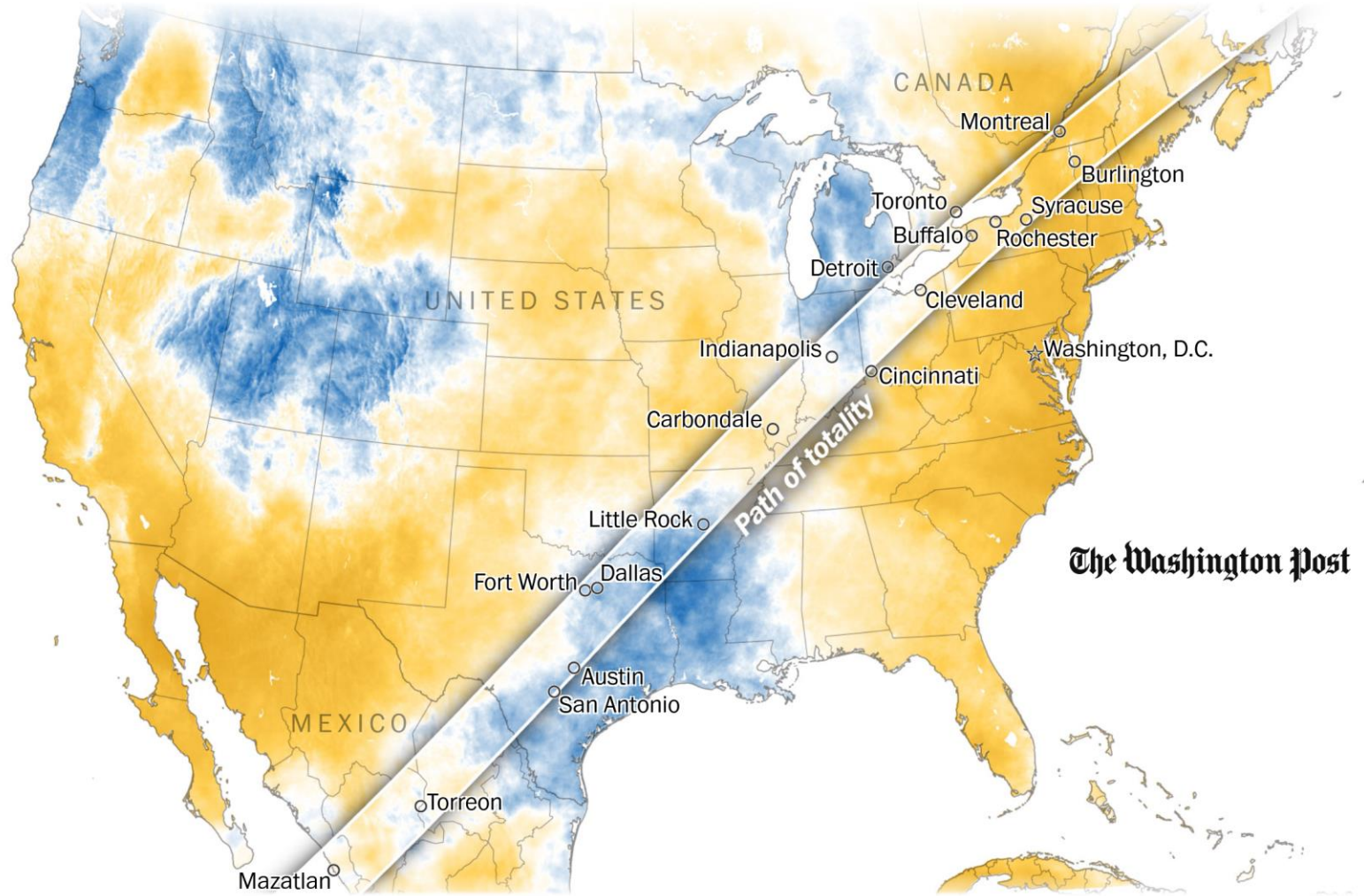
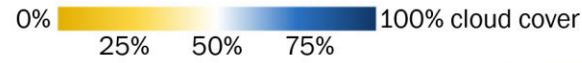
March 24, 2024

VIEWING CONDITIONS




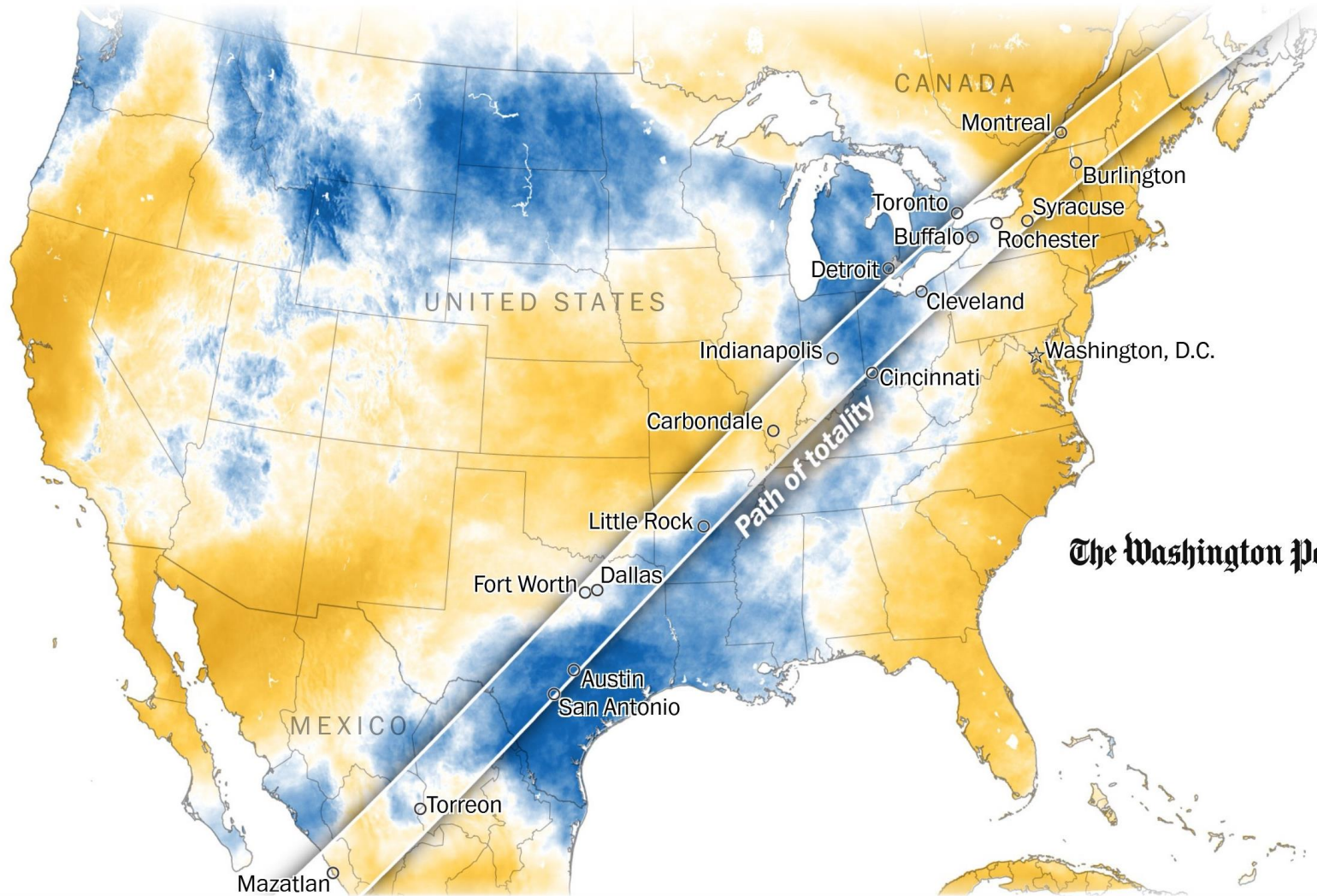
Saturday Afternoon, March 30, 2024

Percentage of sky covered by clouds




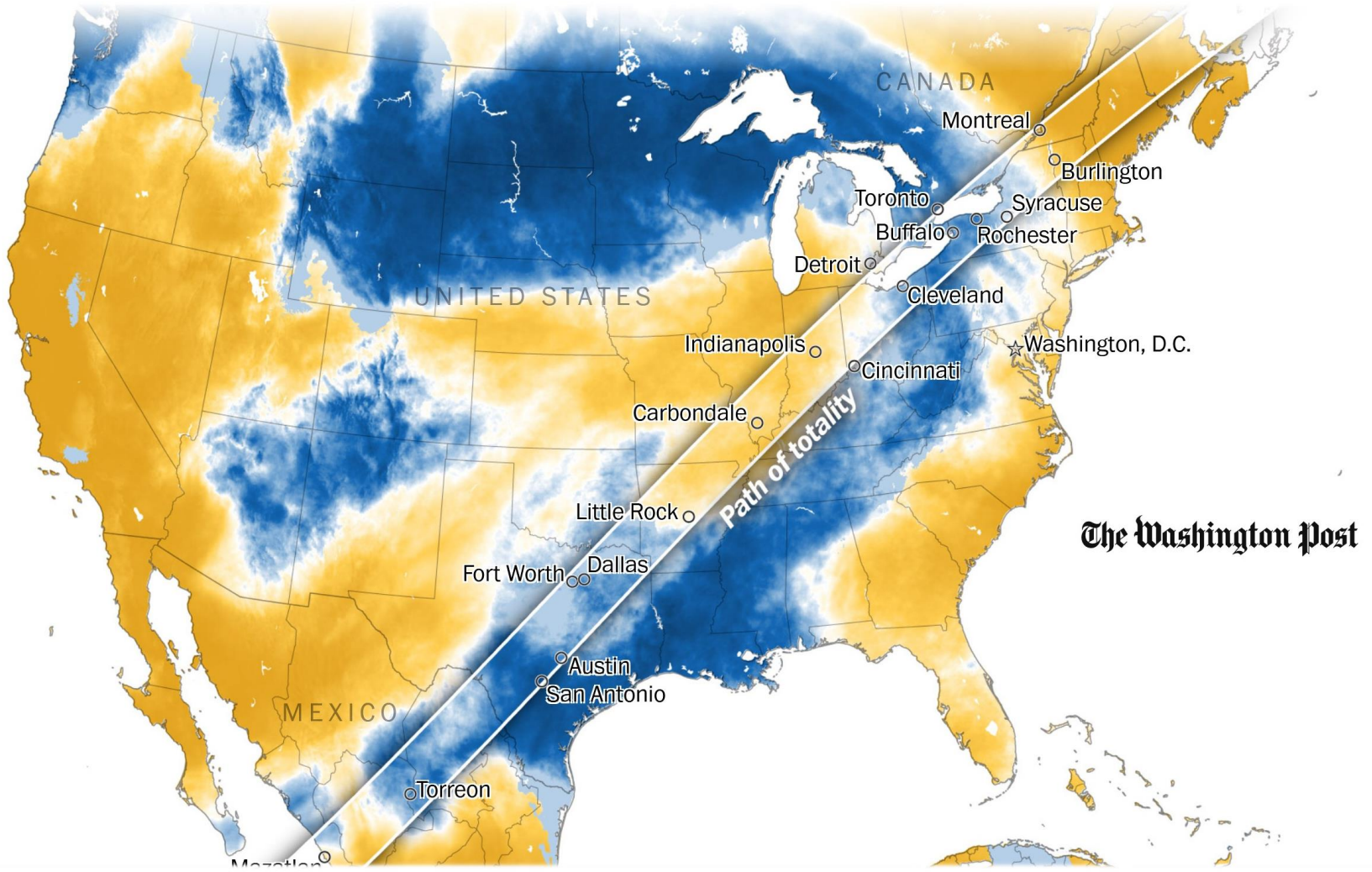
Forecast for April 8, Monday Morning, April 1, 2024

Percentage of sky covered by clouds
0%  100% cloud cover
25% 50% 75%



Forecast for April 8, Saturday Morning, April 6, 2024

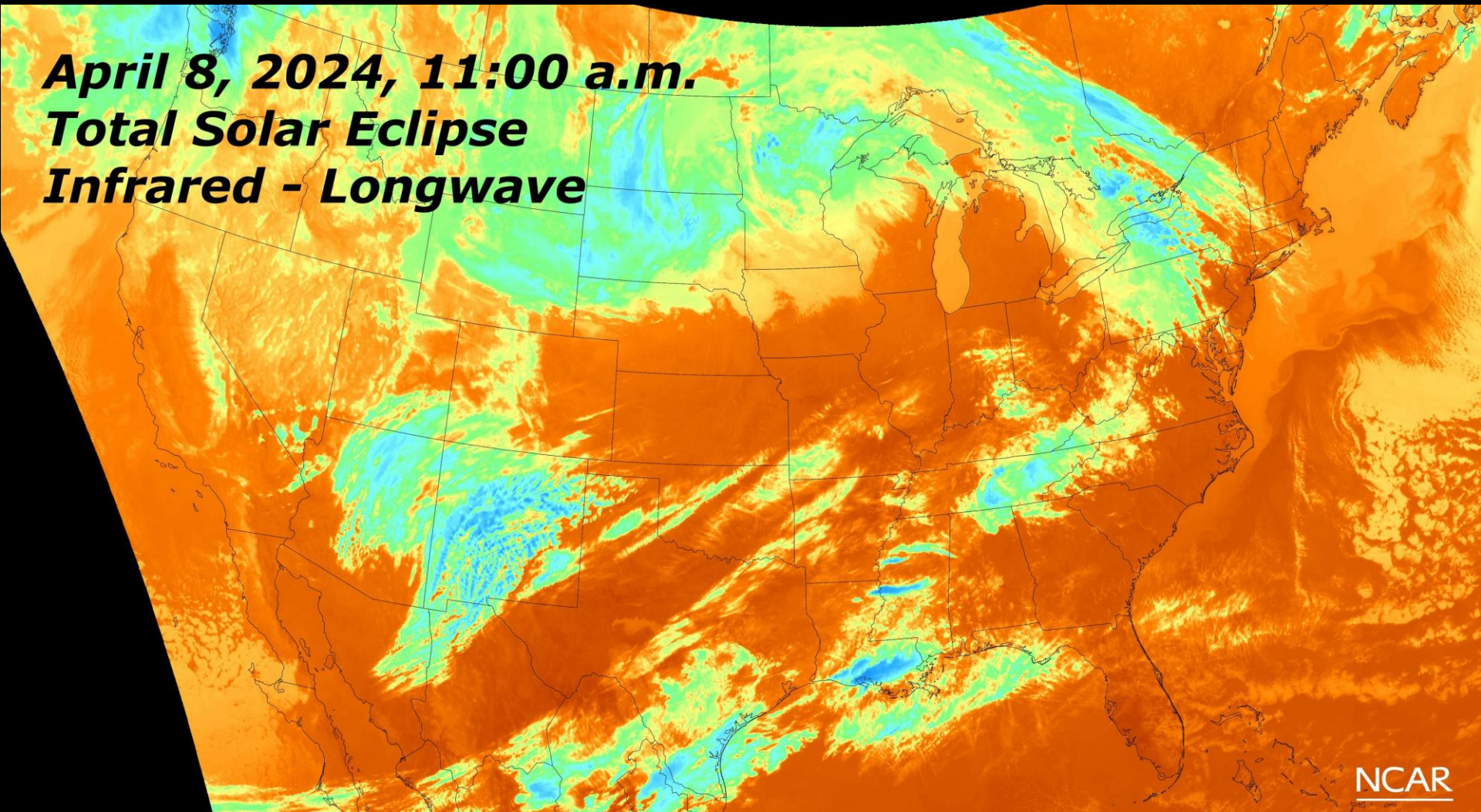
Percentage of sky covered by clouds
0%  100% cloud cover
25% 50% 75%



**April 8, 2024, 11:00 a.m.
Total Solar Eclipse
Visible**

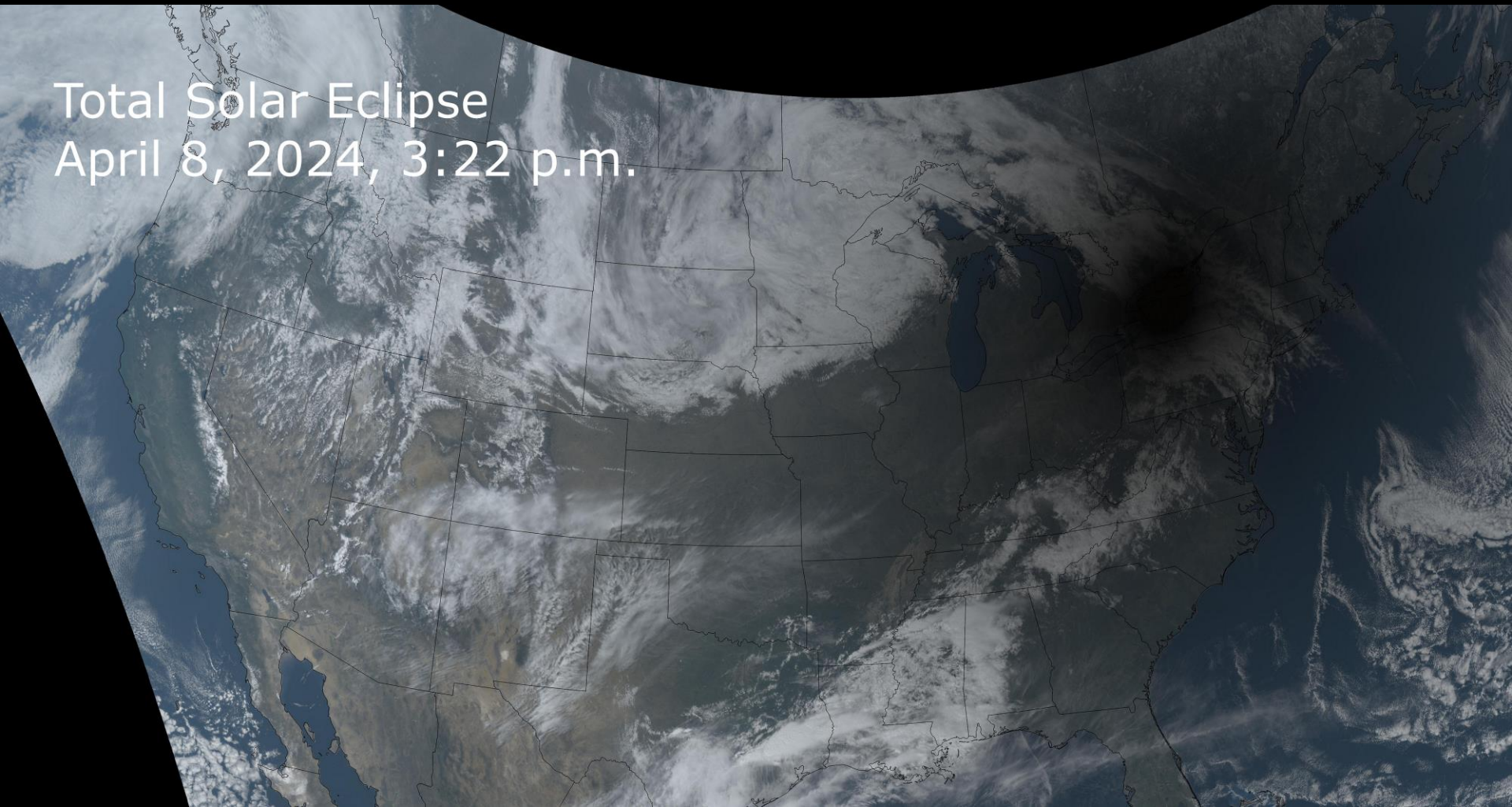
NCAR

**April 8, 2024, 11:00 a.m.
Total Solar Eclipse
Infrared - Longwave**

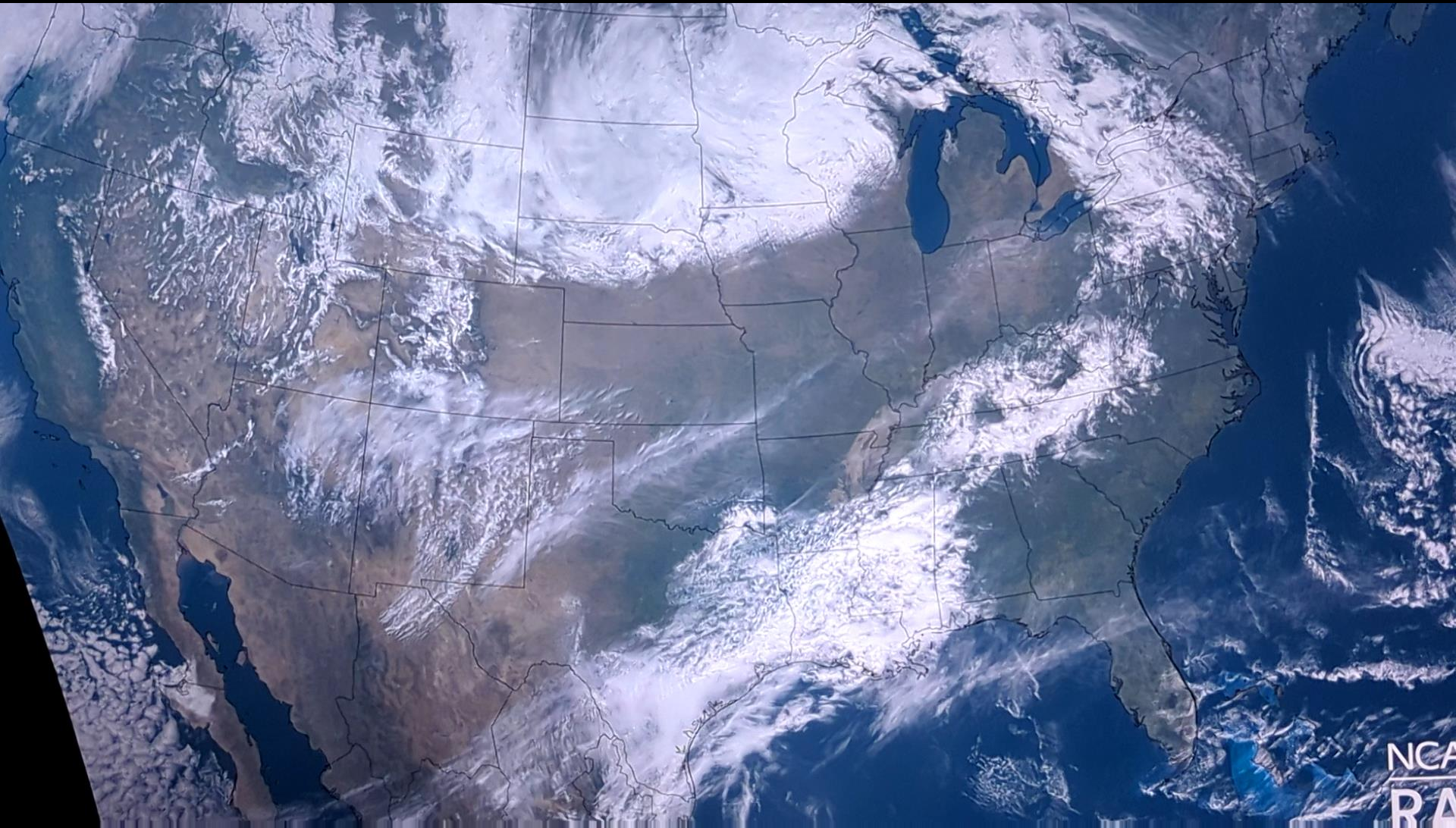


NCAR

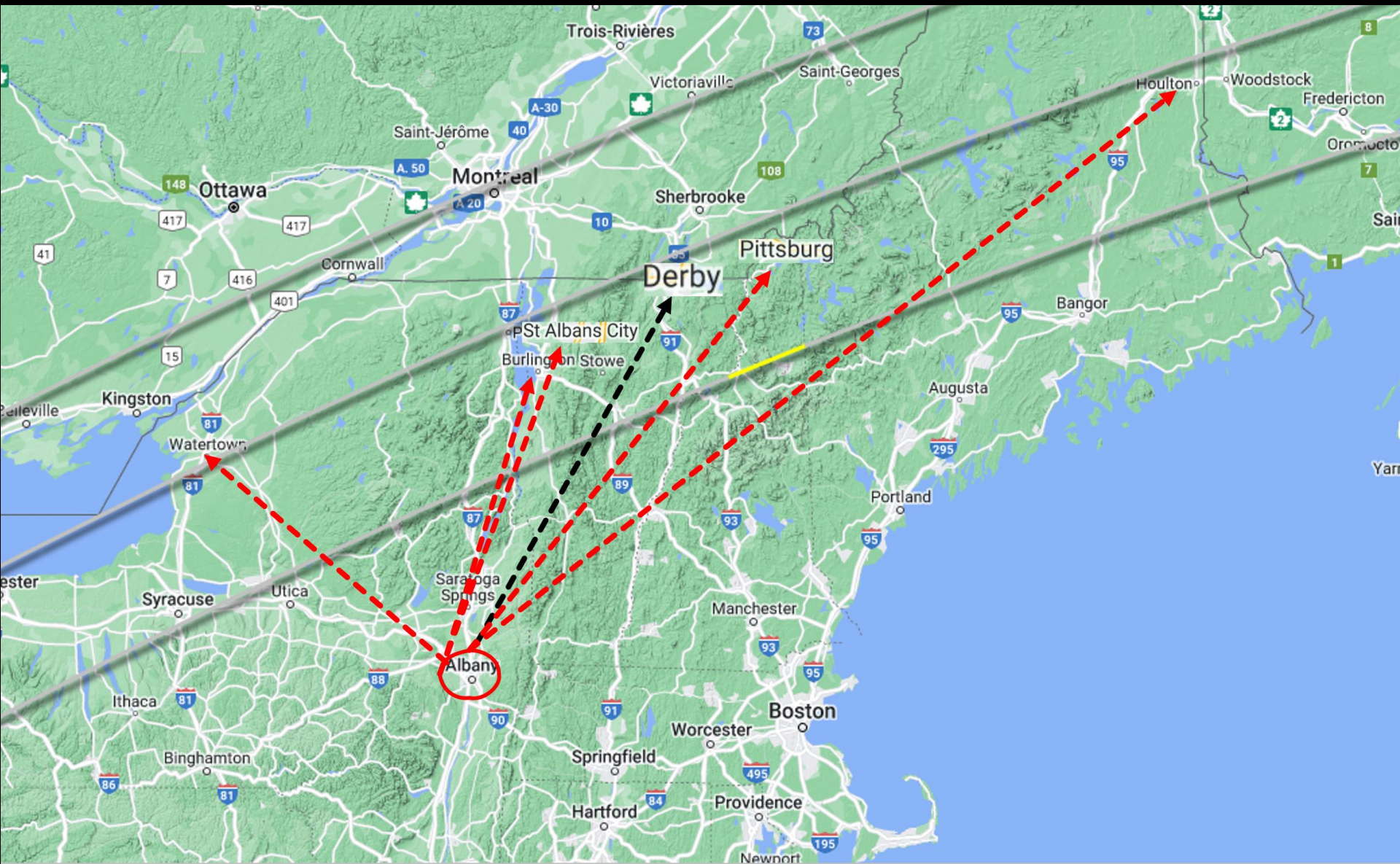
Total Solar Eclipse
April 8, 2024, 3:22 p.m.



Composite of Eclipse Across America



The PLAN

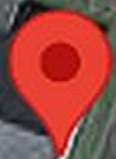


Map adapted by NationalEclipse.com from original at eclipse.gsfc.nasa.gov. Map copyright Google, INEGI. Eclipse predictions courtesy of Fred Espenak, NASA/Goddard Space Flight Center.

re

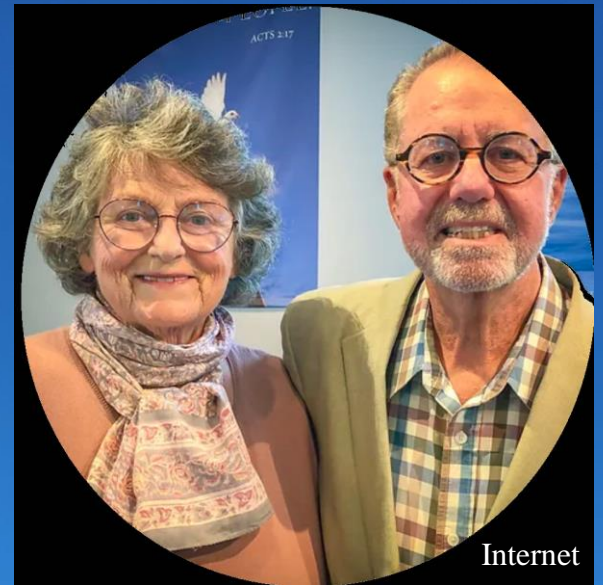
Crawford

Crawford Farm Rd



Newport Church of God

Newport Church of God



Internet

**Bishop Laurence H. Wall &
Sally Wall, Lead Pastor**

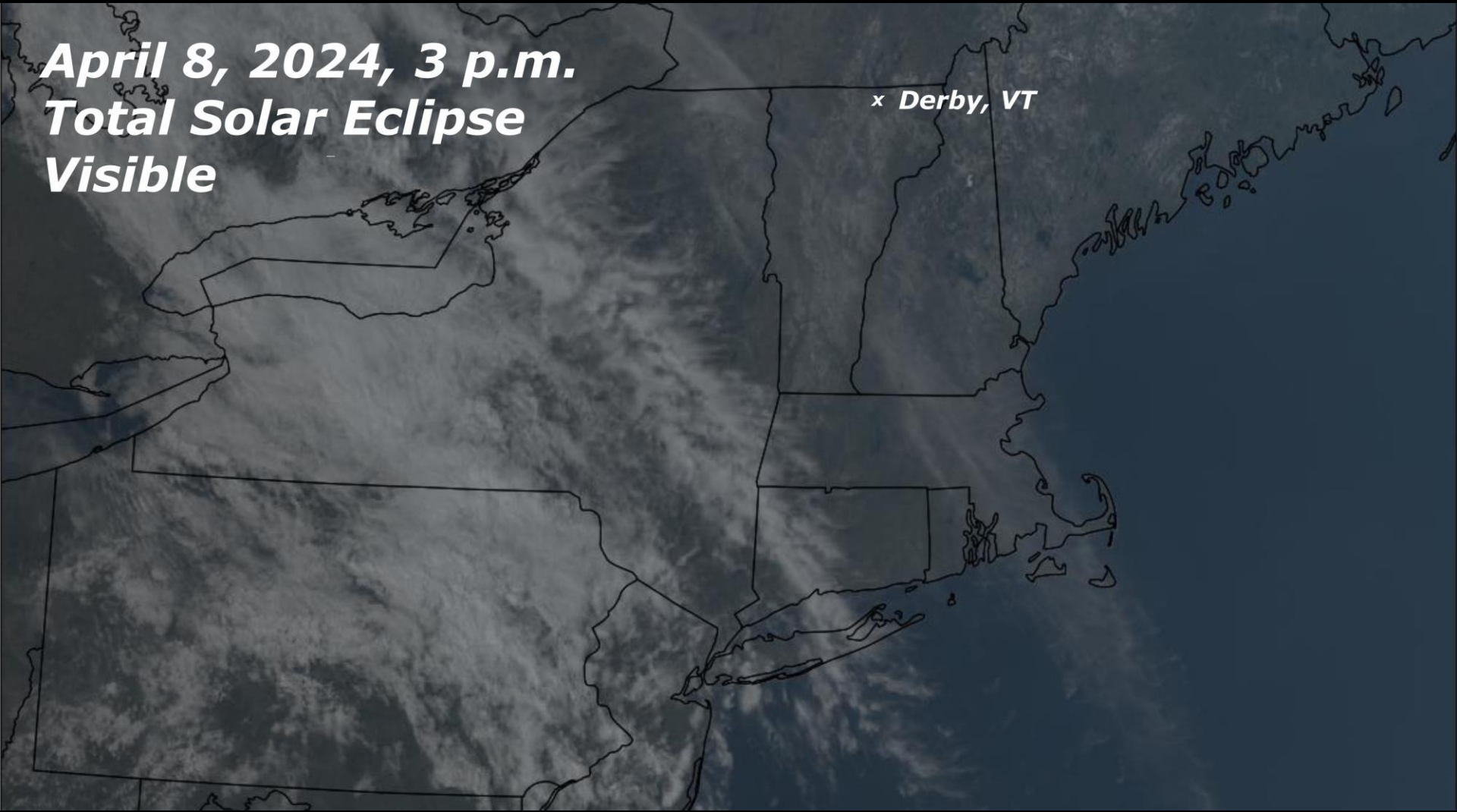


Galaxy S22

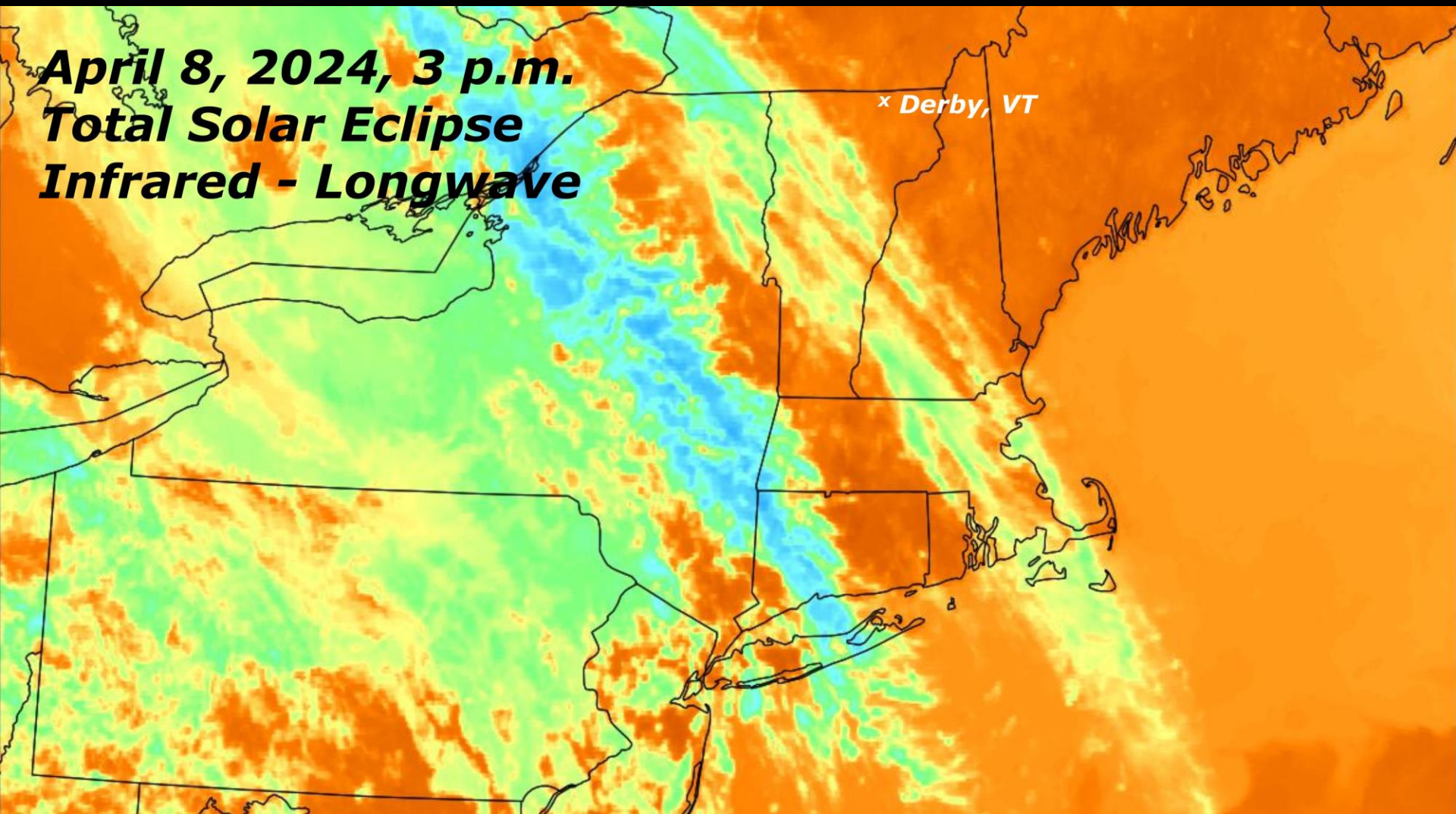
Peter K. Detterline image

**April 8, 2024, 3 p.m.
Total Solar Eclipse
Visible**

x Derby, VT



**April 8, 2024, 3 p.m.
Total Solar Eclipse
Infrared - Longwave**



x Derby, VT



Peter K. Detterline image

The PEOPLE







Zzzzzs at Walmart





The Detterlines

Peter

Jon

Nancy

Galaxy S22

Alan Gilda image



Ryan Hannahoe, Director
Montana Learning Center



Galaxy S22

Nancy Detterline image



Brenda Rath

Dean Bauer

Tobey: The official dog of the 2024 eclipse.

Mark Balanda

Anthony Sparrow



Waiting...





Mark Balanda image





No. 14 “Gold Coated” Welder’s Shade



Gary A. Becker image

Wildman,
Jesse Leayman



Jesse Leayman
A Wildman Video



Baily's Beads

1.43 seconds
between frames



The ECLIPSE



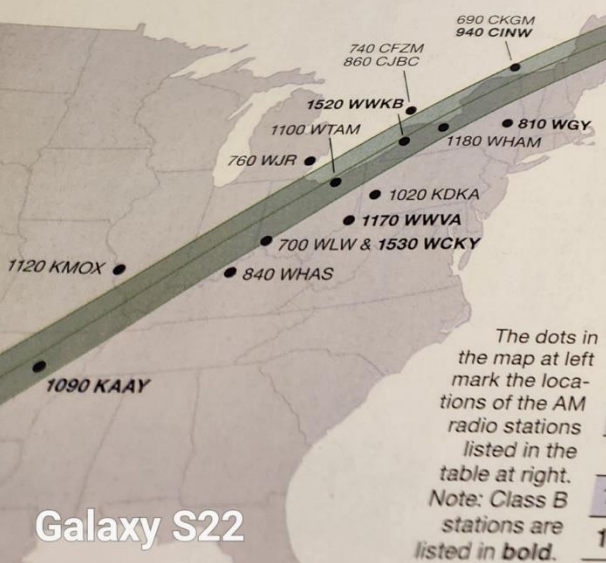
Anthony Lynch



A BOUNCING WAVES...
 Ironically, the F2 layer is actually better for radio waves broadcast by AM stations when the ionosphere is better at night. The reason for this is that there are more ions during the day. Since the atoms are split into by the Sun's ultraviolet (UV) radiation that are constantly recombining into atoms, the number of ions decrease at night because there's no sunlight and increase again every day as the Sun's UV radiation does its daily work.

Utilizing AM Radio for the Eclipse
 Medium wave, or AM (amplitude modulation), is the oldest system of commercial broadcast transmission. The pioneer

AM Stations Along the Path of Totality



becomes increasingly... support long distance reception, at least for a short period before, during, and after totality. Listeners within a few hundred km of a transmitting station residing in or near the path of totality might hear the signal of a distant station begin to materialize. The broadcast

Frequency (kHz)	Call Sign
690	CKGM
700	WLW
740	CFZM
760	WJR
810	WGY
820	WBAP
840	WHAS
860	CJBC
940	CINW
1020	KDKA
1090	KAAY
1100	WTAM
1120	KMOX
1170	WWVA
1180	WHAM
1200	WOAI
1520	WWKB
1530	WCKY

During total solar eclipses and at night, adjustments in the height of the Ionosphere allow AM radio signals to be received from distant stations. Time constraints did not allow this experiment to be conducted during totality.

Galaxy S22

Gary A. Becker Eclipse Photos











Peter Detterline image

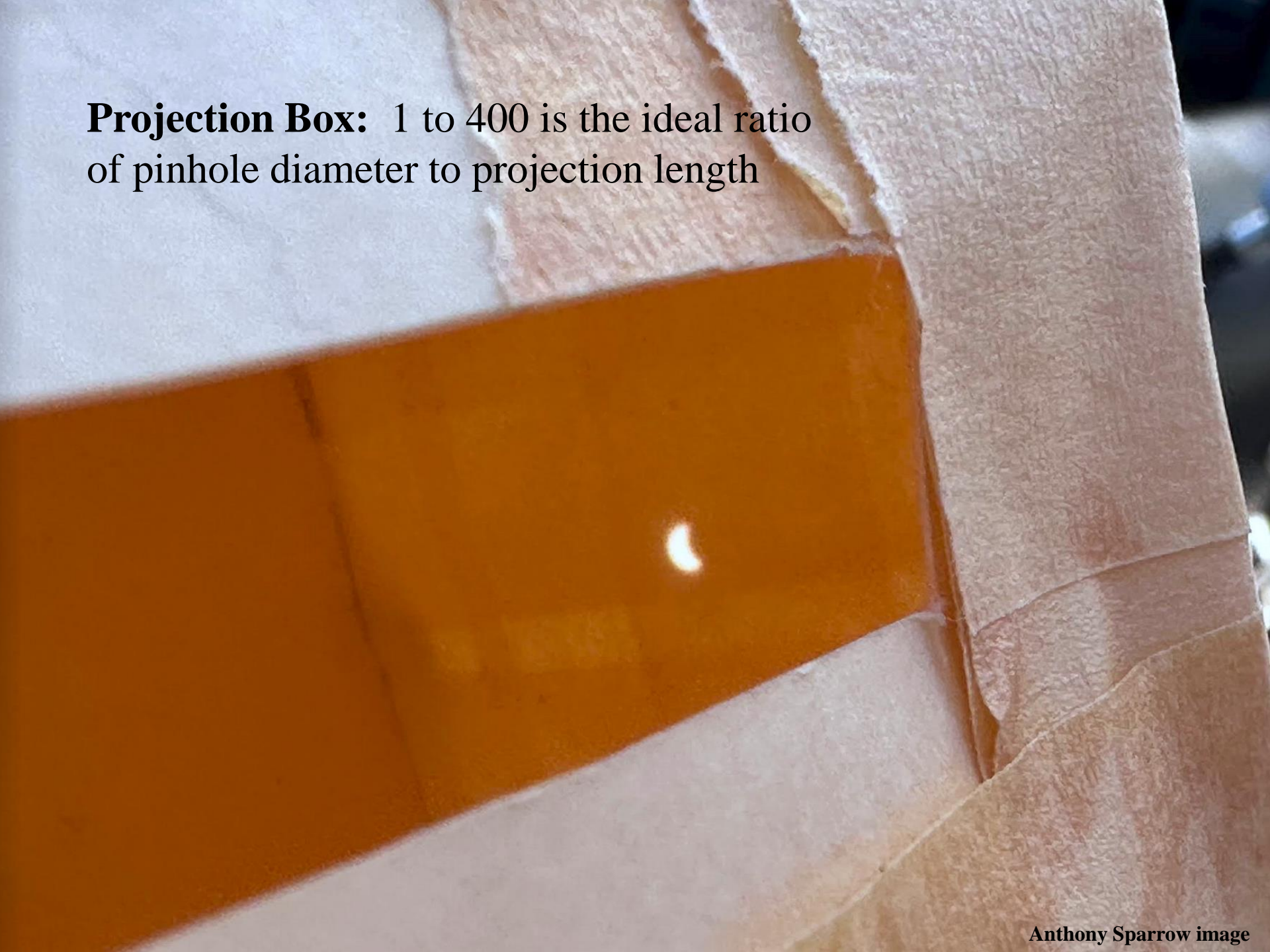


Nancy Detterline image

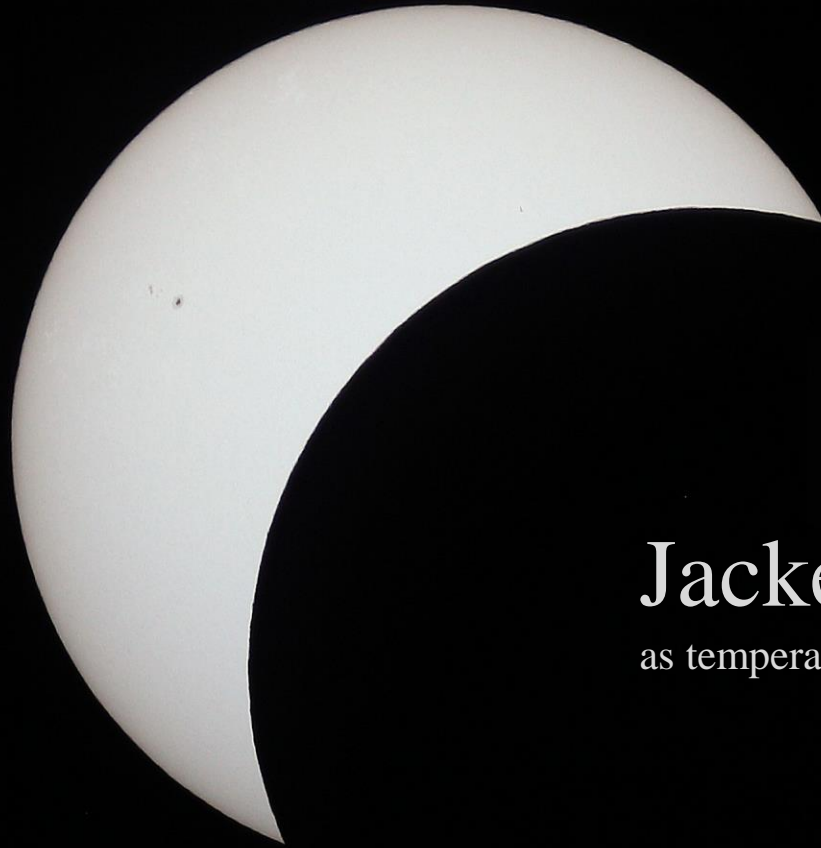


Alan Gilda image

Projection Box: 1 to 400 is the ideal ratio
of pinhole diameter to projection length







Jacket Time

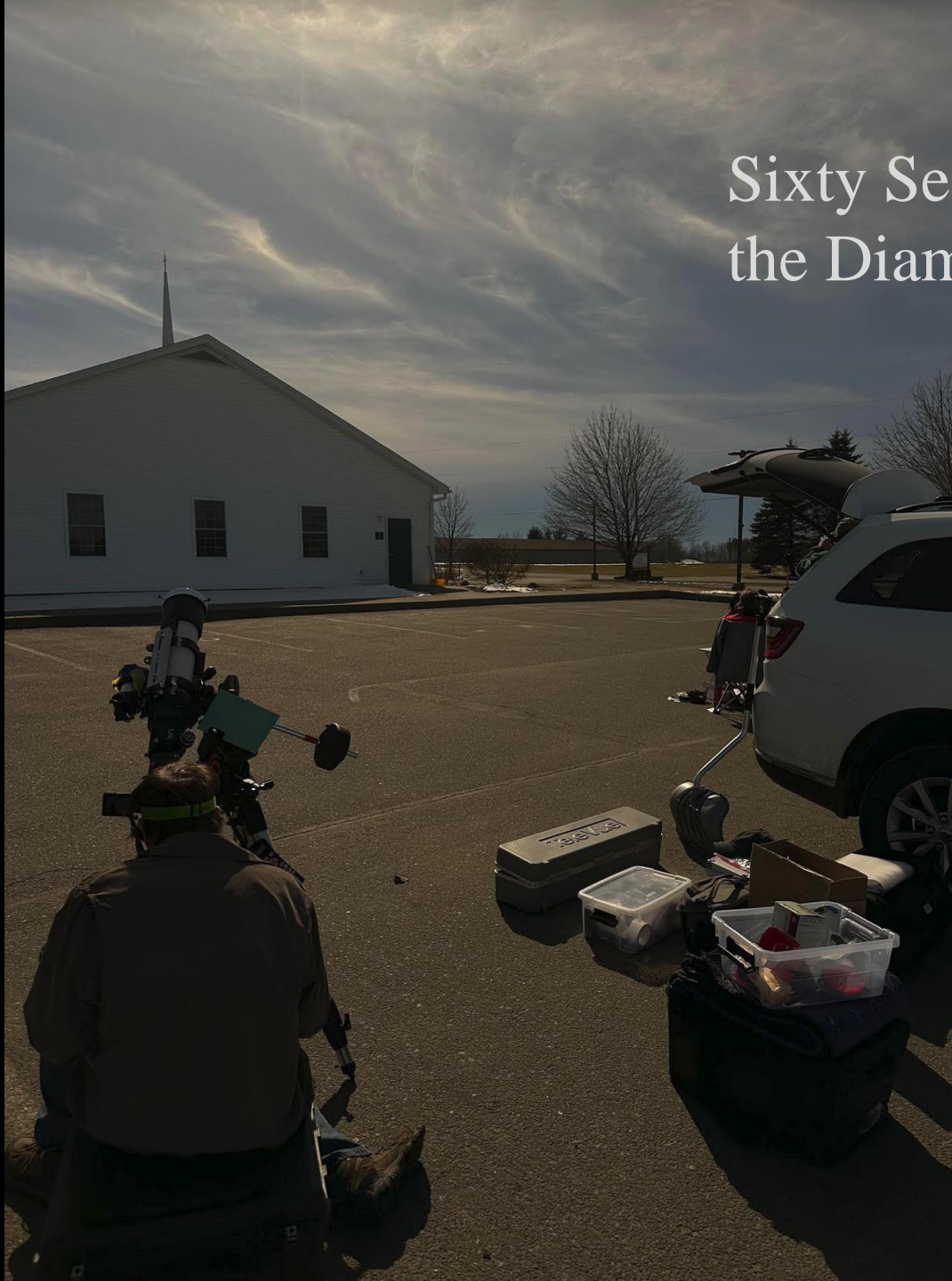
as temperatures dropped noticeably

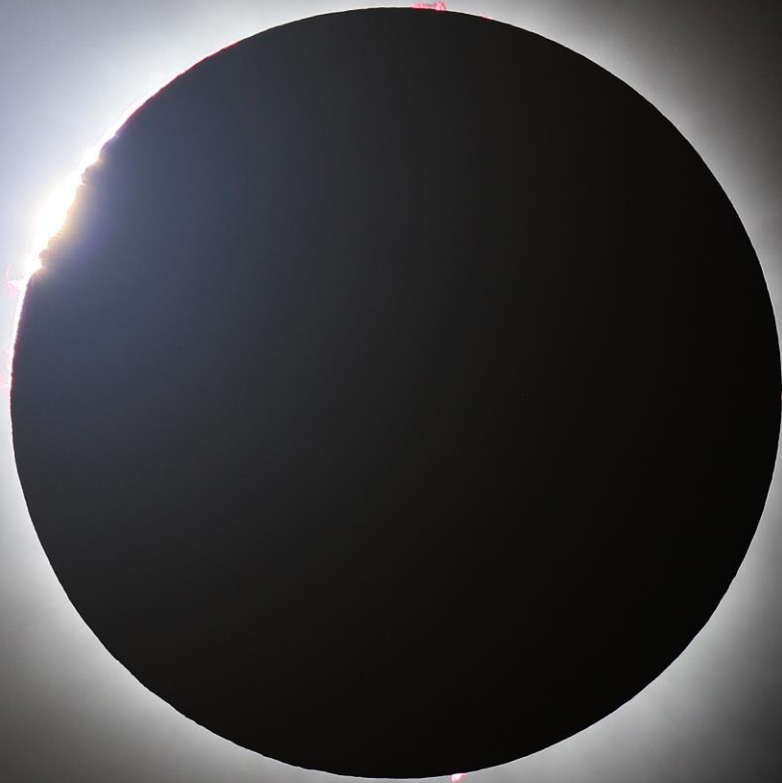


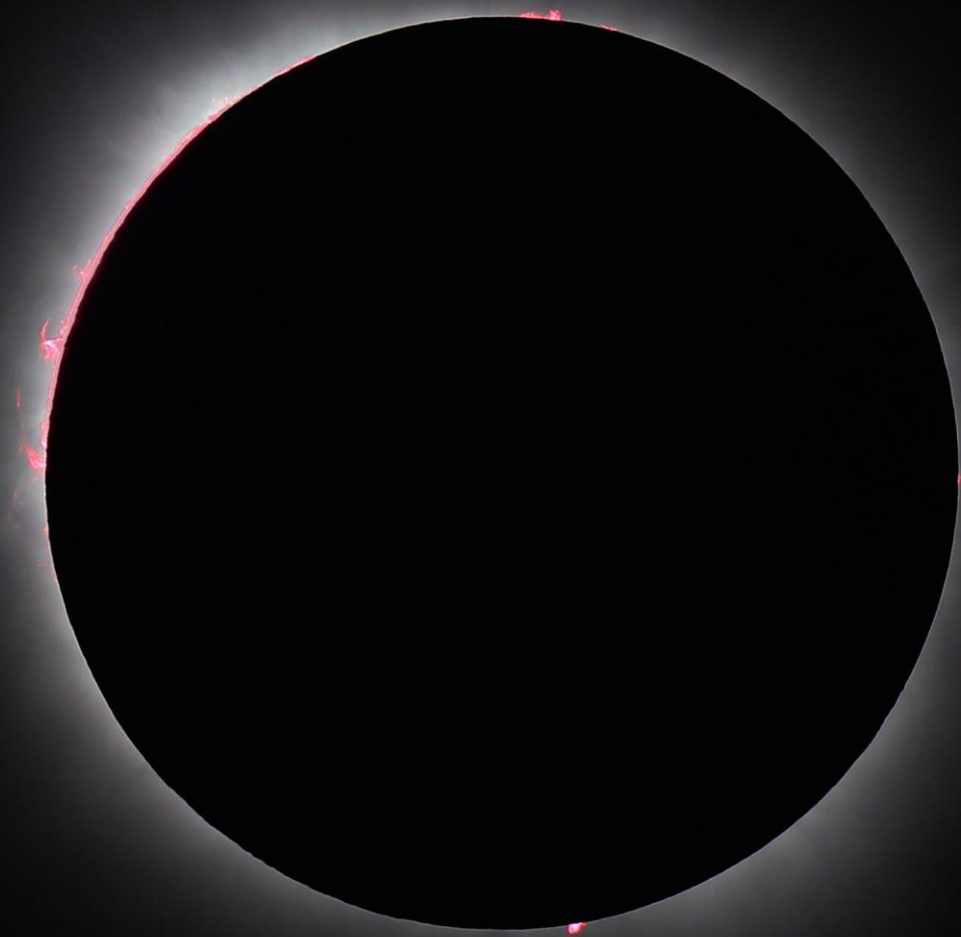




Sixty Seconds Before the Diamond Ring

















Gary A. Becker image

Peter K. Detterline Eclipse Photos



Galaxy S22



Galaxy S22

Peter Detterline image

Peter Detterline image







Baily's Beads

Mountains projecting from the sun's limb, obscures sunlight while light still shines from the valleys between those mountains.





Peter K. Detterline image



Ryan Hannahoe image















The TRAFFIC

Fifty Miles North of Albany, 11:45 p.m.



TO 20
Western Ave

EXIT 1 E
90 EAST
Albany
Boston

EXIT 1 W
TOLL TOLL TOLL
SOUTH WEST
87 90
New York
Buffalo

25

TRUCKS
REDUCE
SPEED

Thruway
KEEP RIGHT



Peter K. Detterline image

Say Goodbye to the Sun



The Eclipse is at Hand!

Prepare Yourself

April 8, 2-4:30 p.m.

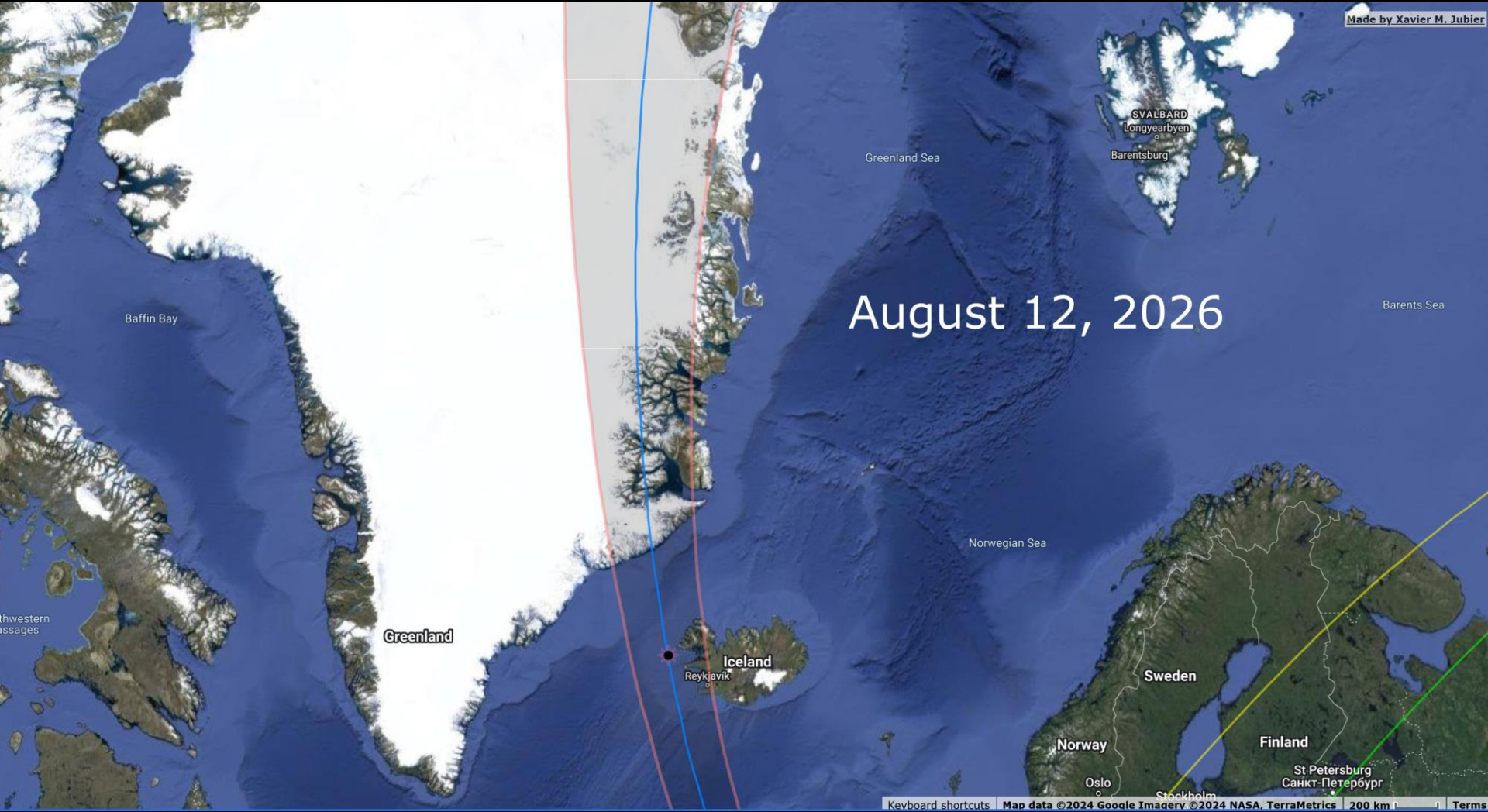
PPHAC Commons/HILL Lawn

(Weather Permitting)

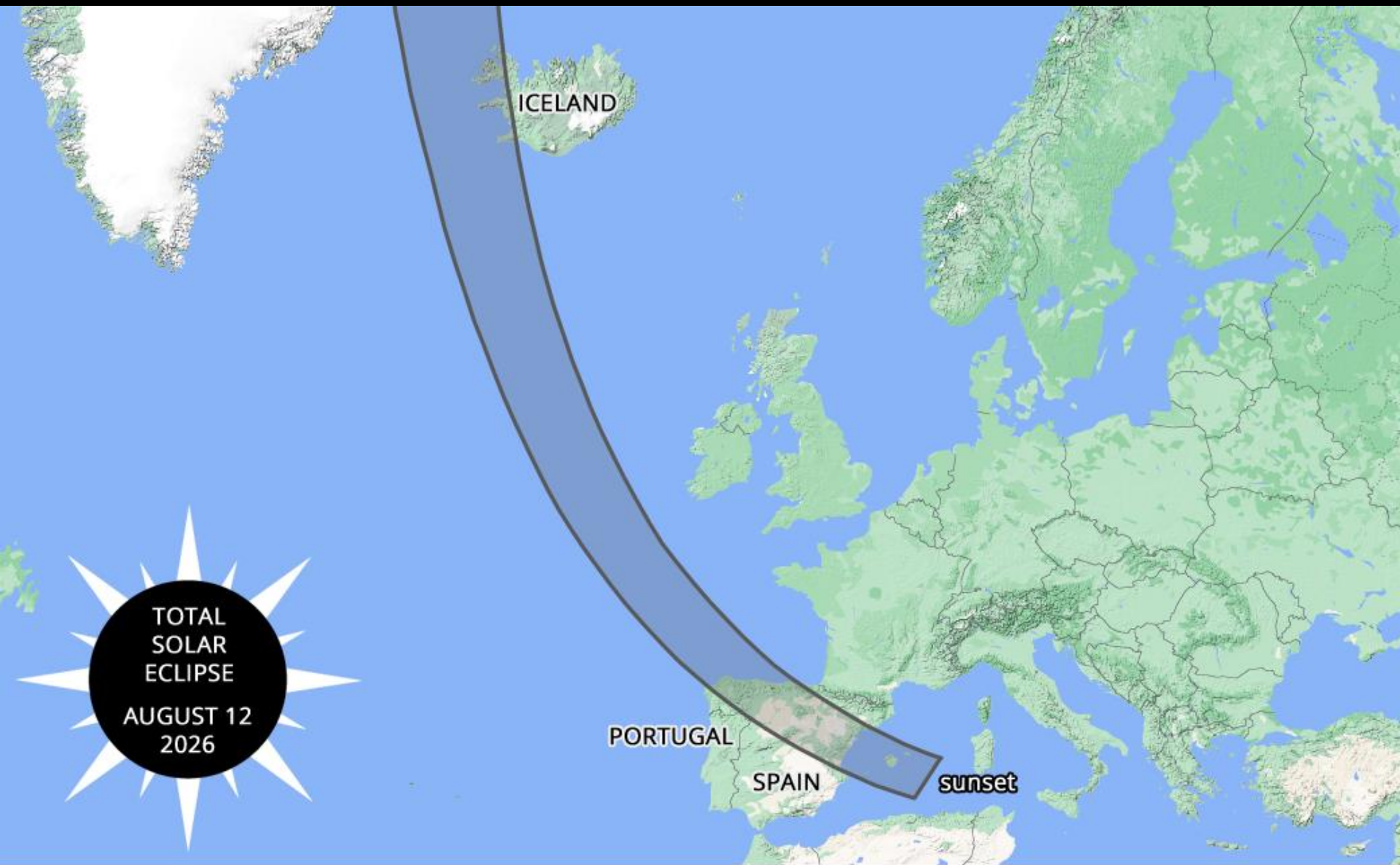




Next Eclipse



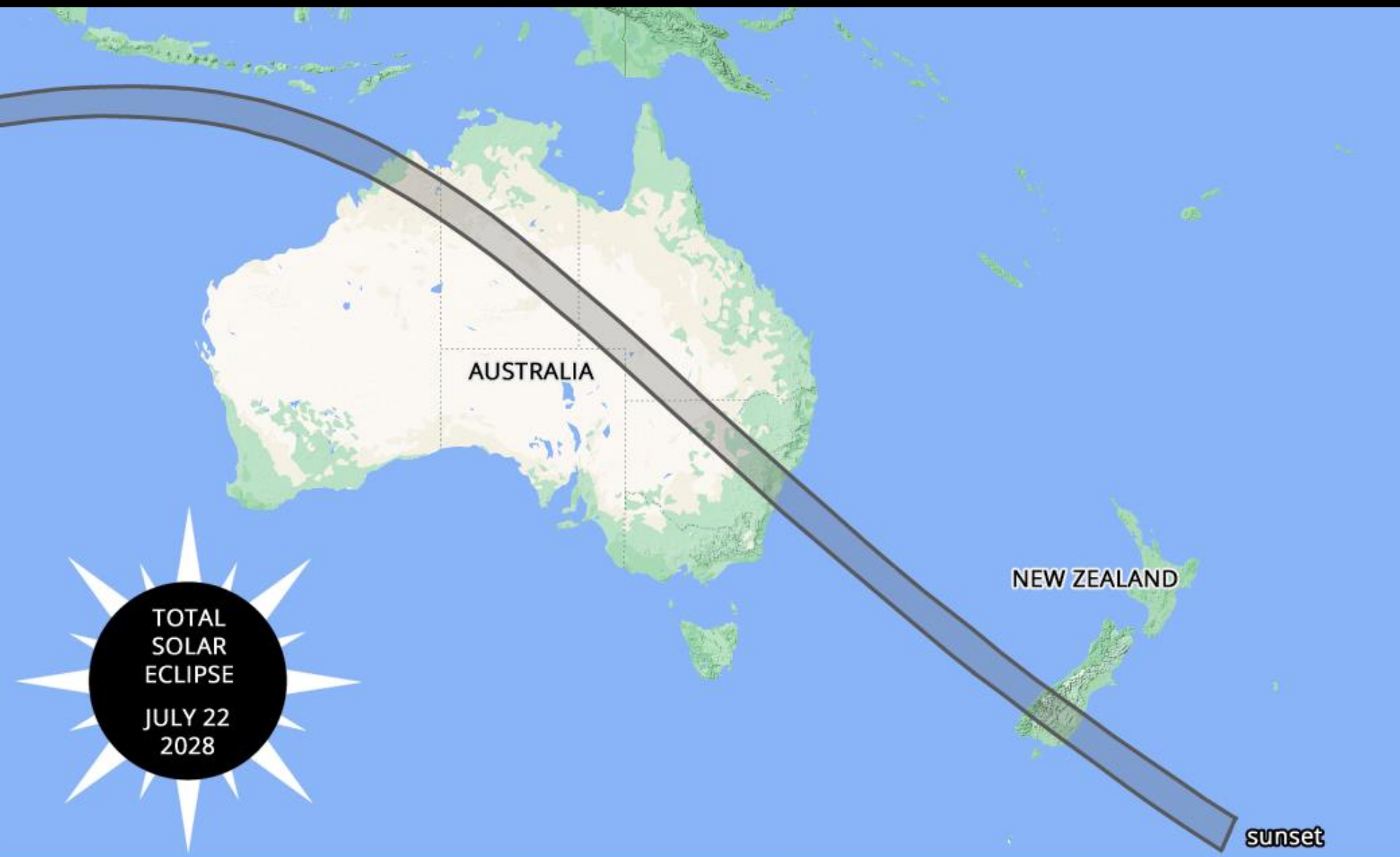
August 12, 2026



Map adapted by NationalEclipse.com from original at eclipse.gsfc.nasa.gov. Map copyright Google, INEGI, ORION-ME. Eclipse predictions courtesy of Fred Espenak, NASA/Goddard Space Flight Center.



Map adapted by NationalEclipse.com from original at eclipse.gsfc.nasa.gov. Map copyright Google, INEGI, ORION-ME. Eclipse predictions courtesy of Fred Espenak, NASA/Goddard Space Flight Center.



Map adapted by NationalEclipse.com from original at eclipse.gsfc.nasa.gov. Map copyright Google, INEGI, ORION-ME. Eclipse predictions courtesy of Fred Espenak, NASA/Goddard Space Flight Center.

Finish